

An Chomhairle
Mhúinteoireachta



The Teaching Council



How to become a **primary teacher**

September 2023

How to become a primary teacher

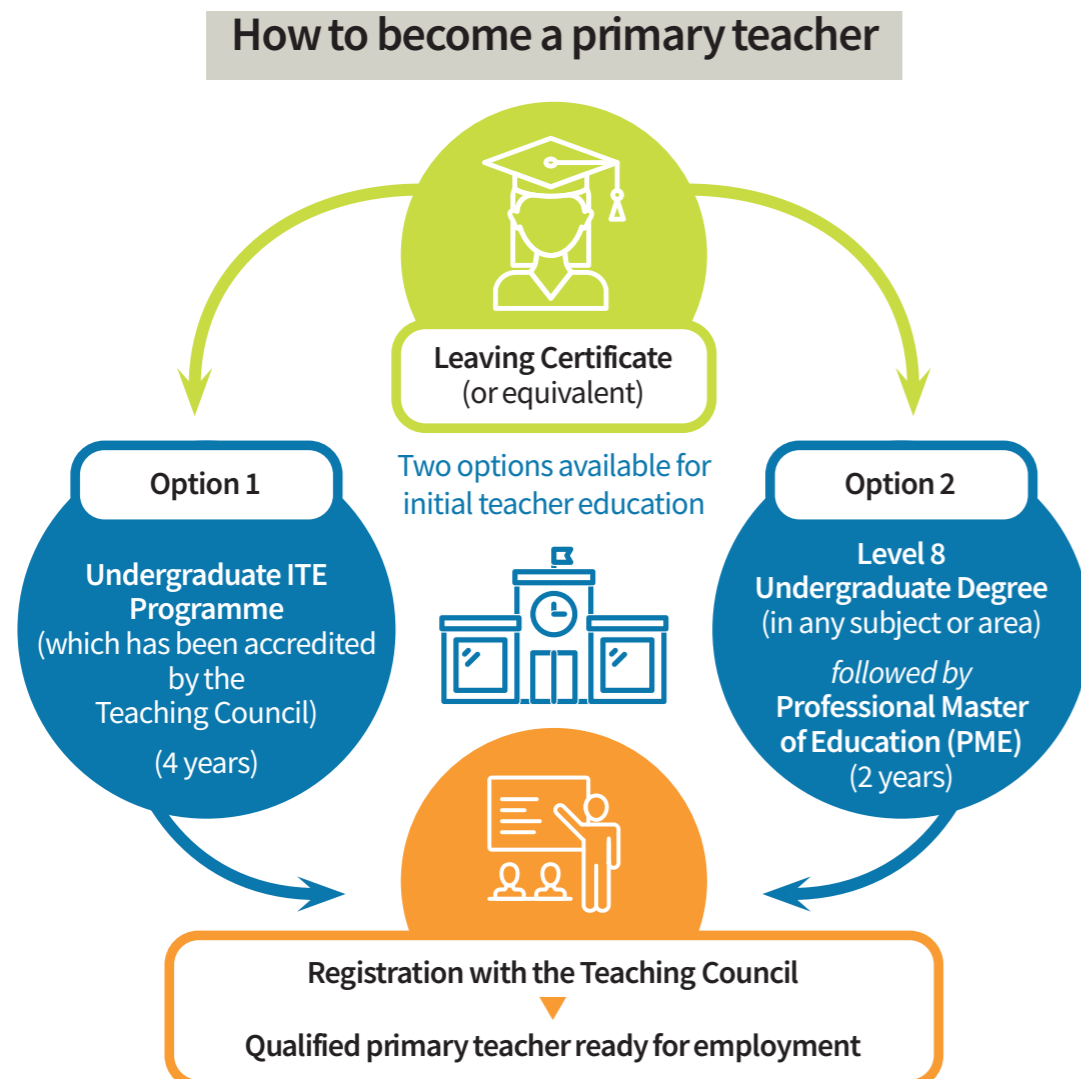
To become a primary teacher in Ireland, you must complete a programme of **initial teacher education (ITE)**. There are two options to choose from.

1. The first option is to complete an undergraduate ITE programme. This takes four years.
2. The second option is to complete a postgraduate degree, called the Professional Master of Education (PME). This takes two years. You can apply for the PME during the final year of your Level 8 undergraduate degree, or when you've completed your Level 8 degree.

You must demonstrate competence in the Irish language prior to entry to the undergraduate ITE programme or the PME.

On completion of your undergraduate ITE programme or the PME, you will be eligible to register as a primary teacher with the Teaching Council.

The graphic below shows the two most common pathways which lead to registration with the Teaching Council.



Providers of programmes of initial teacher education **primary**

- Dublin City University
- Hibernia College (*PME only*)
- Marino Institute of Education
- Mary Immaculate College
- Maynooth University
(*Froebel Department of Primary and Early Childhood Education*)

For more information, please see
www.gov.ie/TeachingTransforms



Points to consider

1. Most applications for undergraduate ITE programmes are made through the **Central Applications Office (CAO)**. You should check the application process with the university/college.
2. As with all CAO courses, you need to meet all the entry requirements set by the university/college in your year of entry. This might mean attaining a certain number of points in your Leaving Certificate. Or for mature students, you may have to attend an interview. Before applying, make sure to check the full list of entry requirements, as they may vary between the universities/colleges.
3. The application process for PME programmes can vary. You should consult the website of each university/college for up-to-date information on the entry requirements, how to submit your application, what the closing date is, and what the fees are.
4. PME applicants must achieve 65% or higher on the oral component of the **Teastas Eorpach na Gaeilge (TEG)** Meánleibhéal 1 (B1) Irish examination, prior to the closing date for applications. Currently, applicants to the Hibernia College PME can present their TEG certificate or alternatively they can undertake an interview through Irish with the College.
5. For primary teaching, there are minimum grades in Mathematics, English and Irish required at Leaving Certificate (or equivalent) set by the Department of Education. Full details on the entry requirements can be found on the websites of the universities/colleges.
6. All primary ITE students are required to complete two placements in the Gaeltacht known as the Tréimhse Foghlama sa Ghaeltacht.
7. If you study primary teaching outside of Ireland and gain the status of a 'fully qualified teacher' you can apply to register as a teacher in Ireland under the EU Directive 2005/36/EC. Your qualifications will be assessed to ensure they are of comparable standard to those achieved by graduates of ITE programmes in Ireland. If significant differences are found between your qualification and the qualification achieved by graduates of accredited programmes in Ireland, conditions may be applied to your registration. This ensures that everyone teaching in Ireland has met the same minimum standards of initial teacher education. For more information, see **teachingcouncil.ie**.

Programme for Access to Higher Education (PATH) is a funding programme designed to support and provide increased access to ITE for certain categories of people. For more information, see **studentfinance.ie**



Where can I find further information?

The Department of Education's Teaching Transforms page is an excellent source of information: **www.gov.ie/TeachingTransforms**

The Teaching Council website provides information on registration after you qualify: **www.teachingcouncil.ie**

The Teaching Council and Department of Education staff regularly attend career fairs in colleges and universities. Keep an eye on social pages for updates on events **[@teachingcouncil](#)** / **[@Education_Ire](#)**

